

SYNCHRO Pro 2019.2

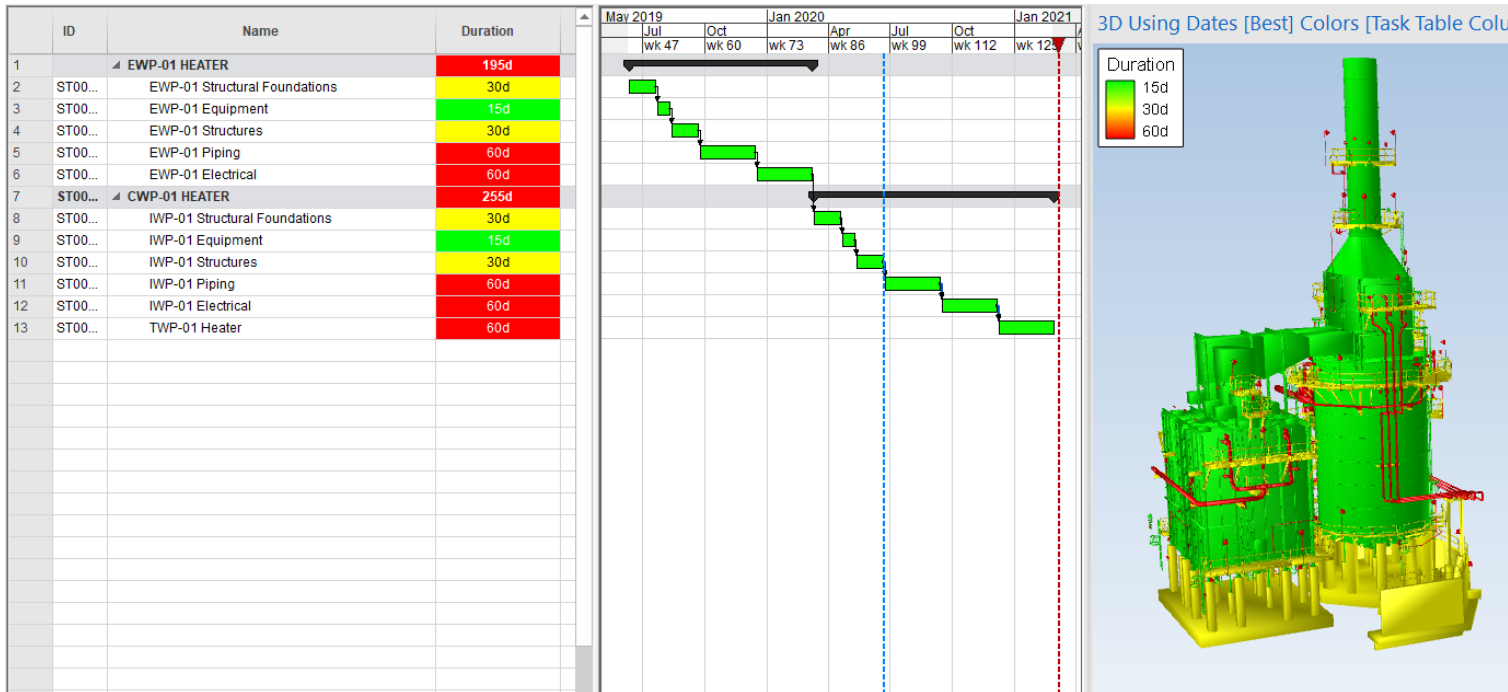
Release April 2020

Bentley[®]
Advancing Infrastructure

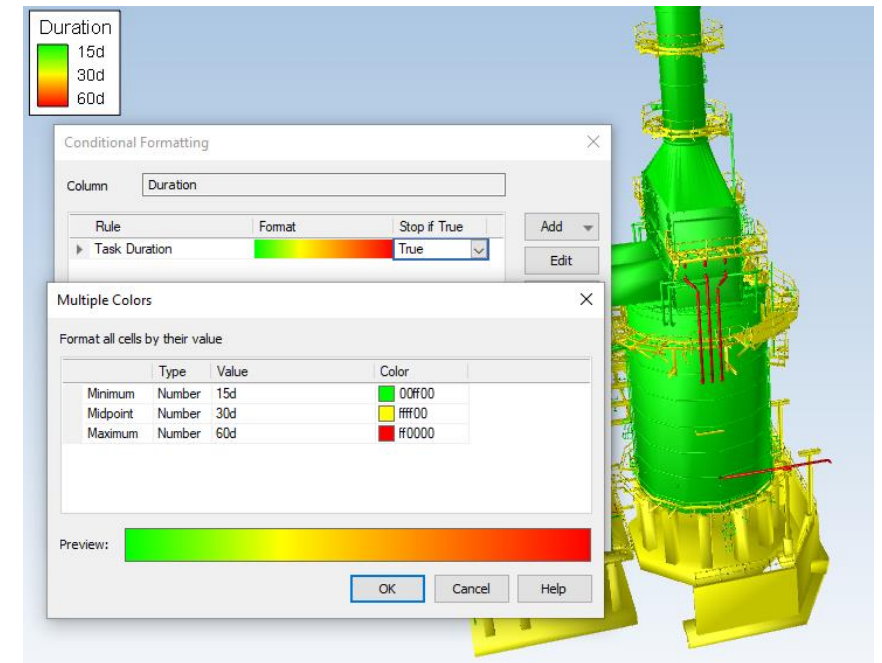
© 2020 Bentley Systems, Incorporated

New color modes: Task and Resources table column

- In addition to existing 3D table column
- Allow coloring by model by any task, resource, or 3D parameter using conditional formatting in the tables

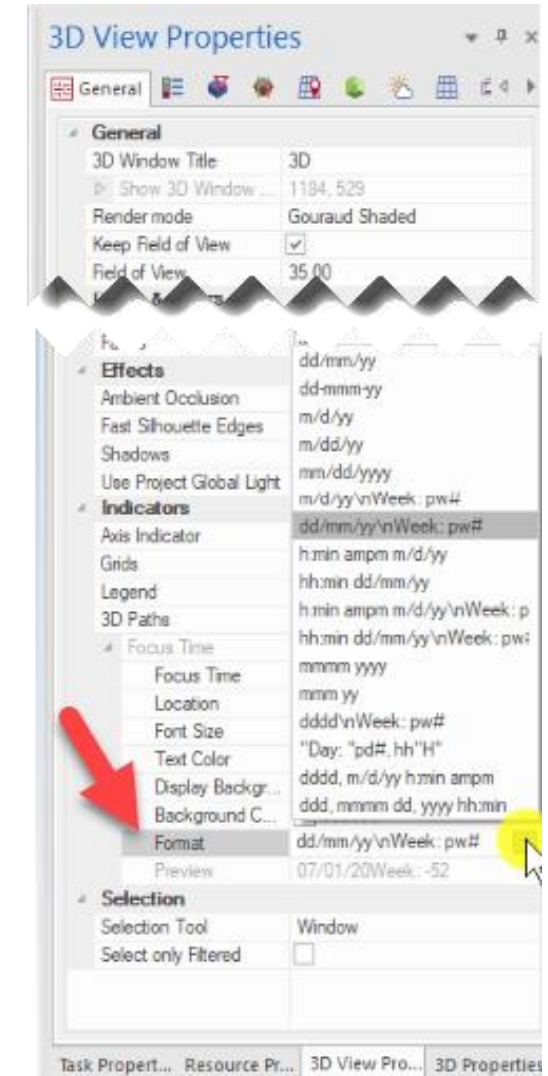
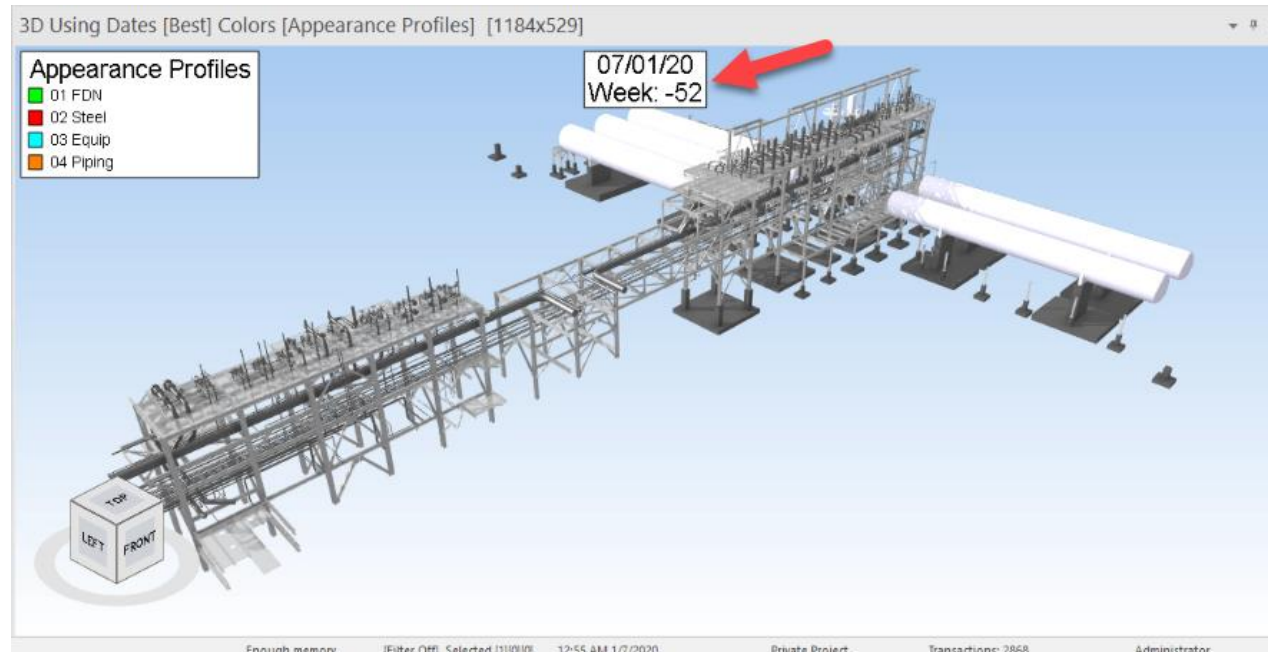


- Legend for task, resource, or 3D table column color modes



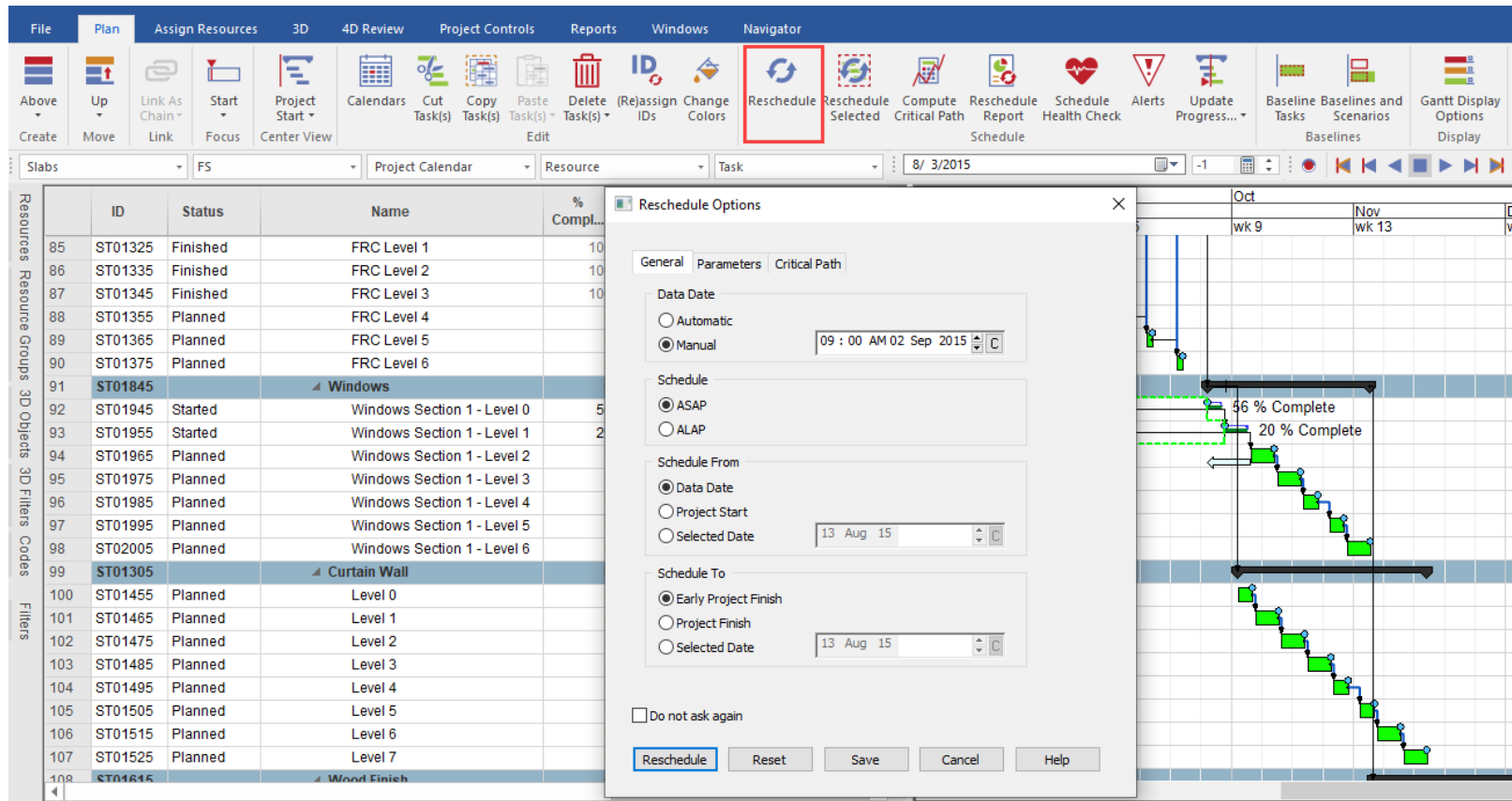
Custom Focus Time Indicator

- Custom editing of date and time in 3D View Properties and Animation exports
- Format date and time any way you want
- Include Project Week or Day numbers, show time of day or date only, add custom text, etc.



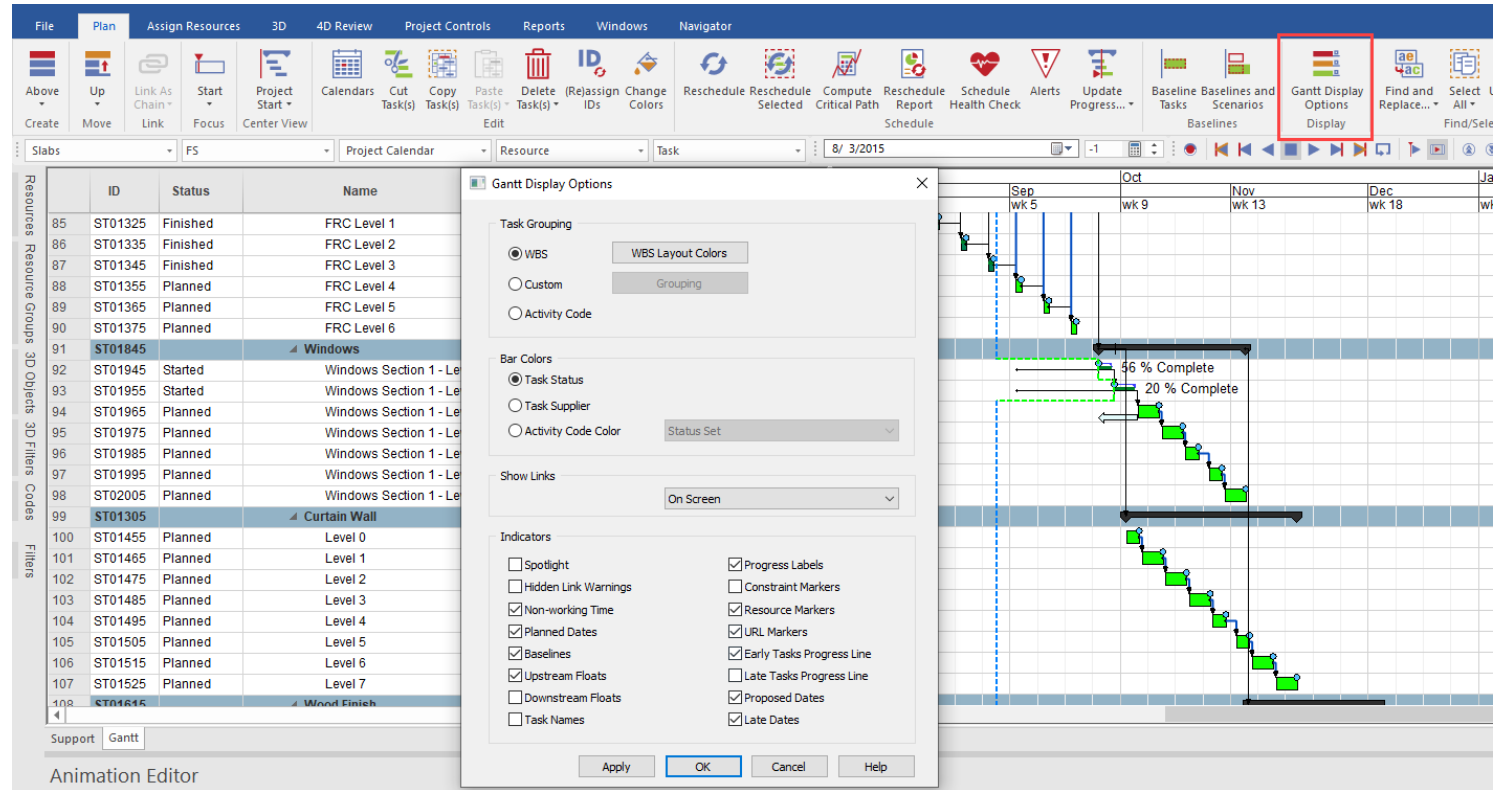
Reschedule Options Dialog

- Combines all rescheduling settings in one place for ease of use



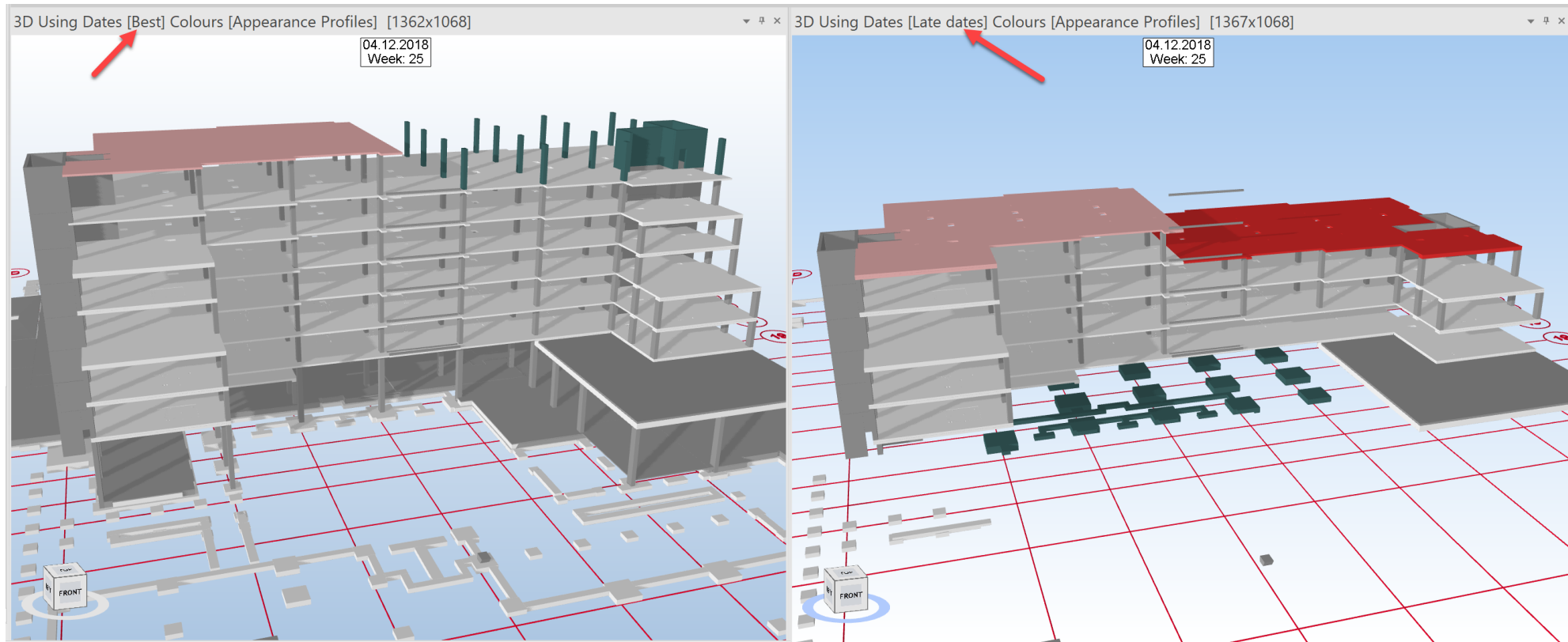
Gantt Display Options Dialog

- Easily find and edit settings related to display of the Gantt Chart from one dialog
 - Edit grouping
 - Bar colors
 - Link display
 - Toggle indicators on/off



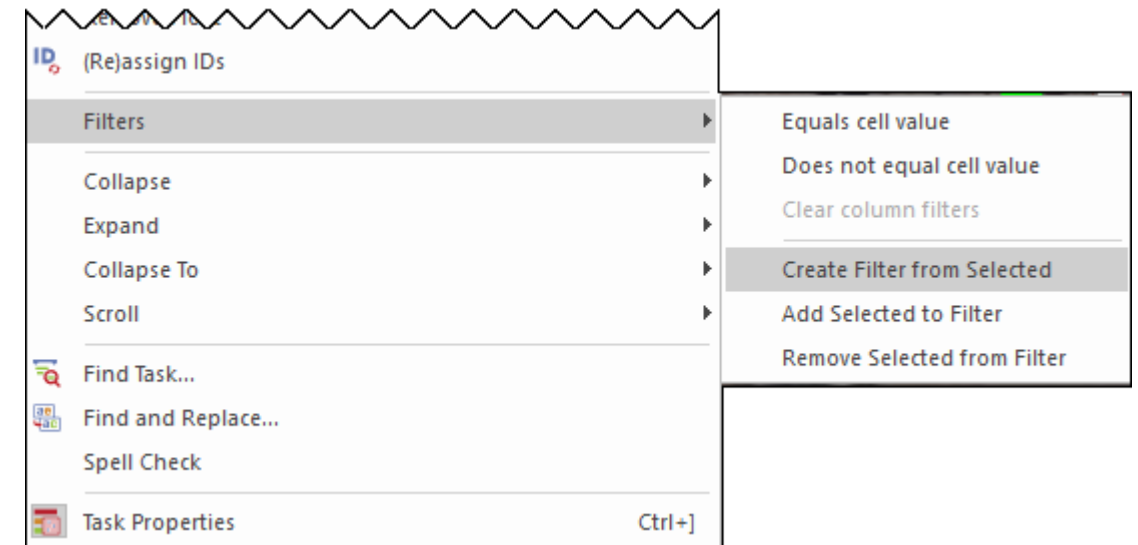
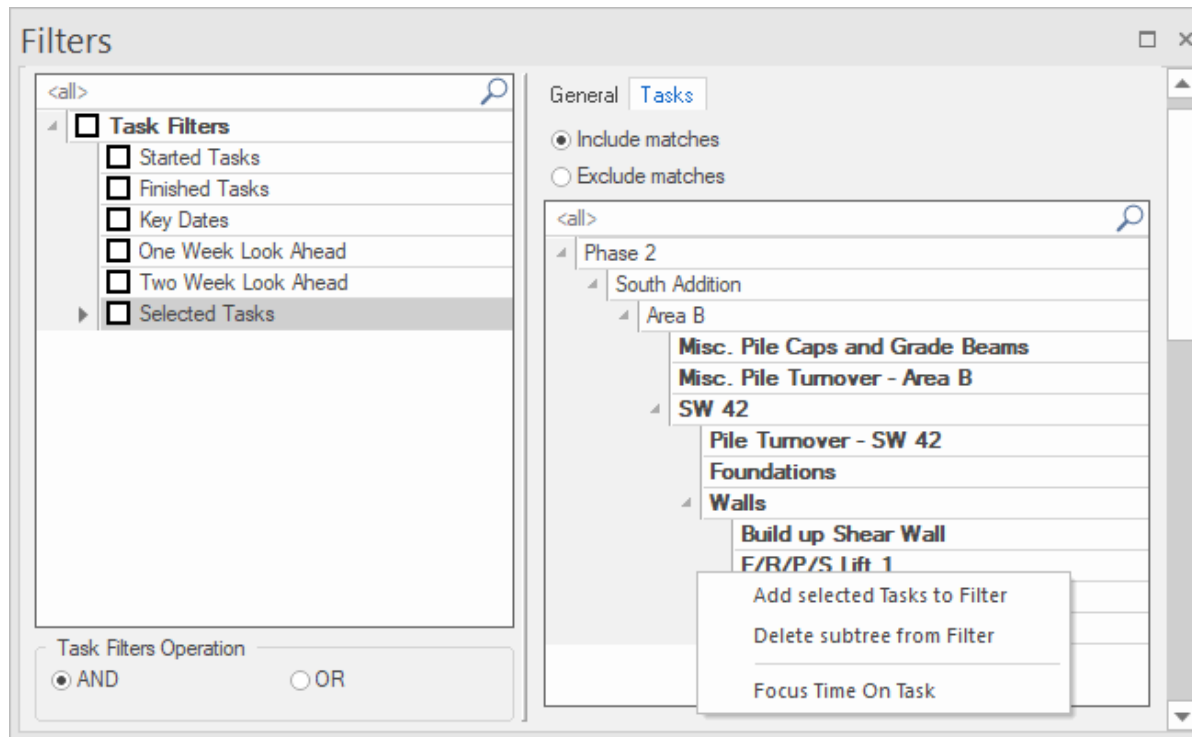
Late Dates Gantt bars and simulation using Late Dates

- Compare early and late dates in the Gantt chart and in side by side 3D windows



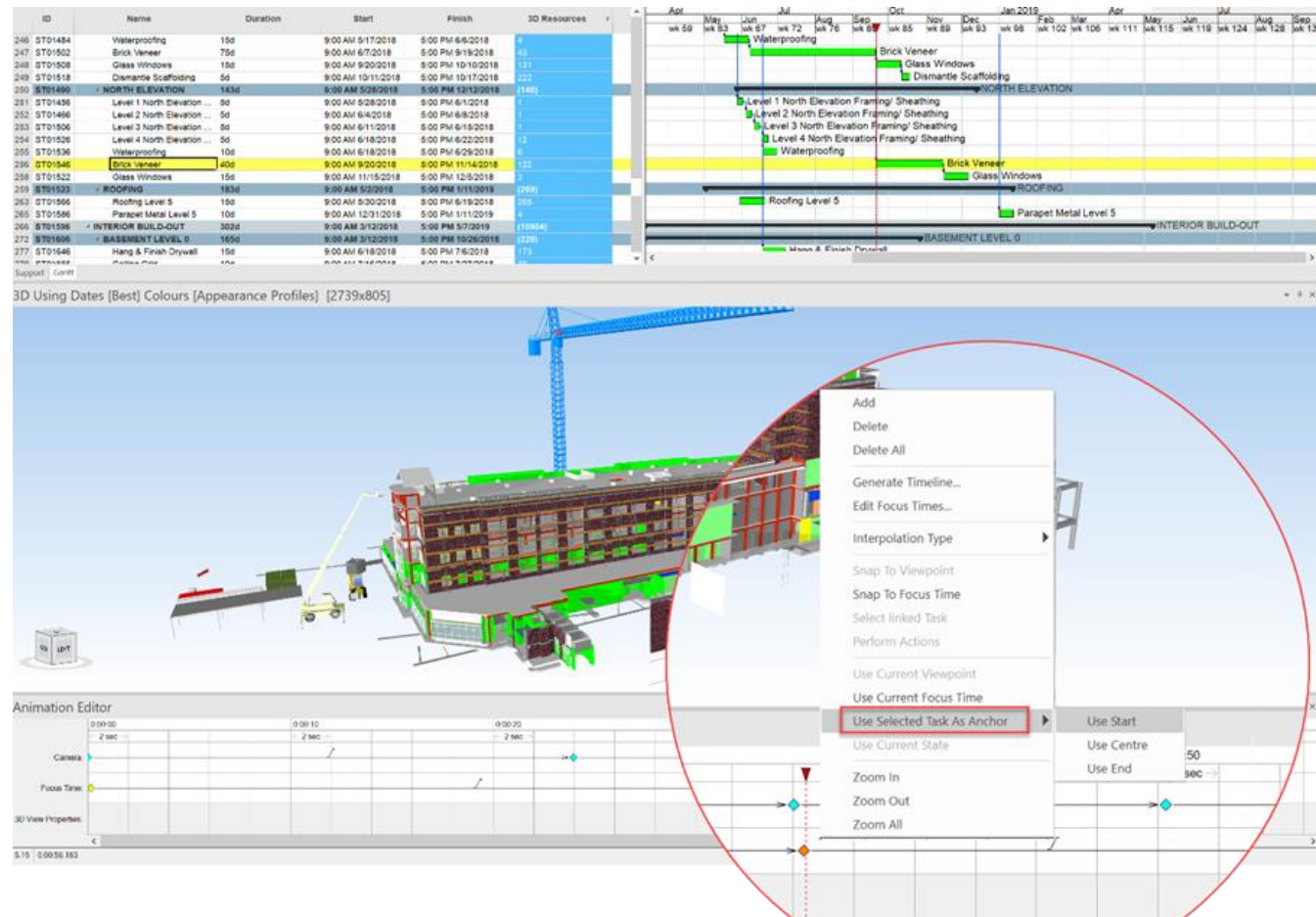
Save Selected Tasks as Filter

- Quickly create a filter from selected tasks for re-use later
- Now any combination of tasks can be saved, even if they do not meet the criteria of the other filter types



Focus Time keyframes linked to Tasks

- Allows automatic update of Animation if schedule changes to prevent rework.



User-defined project Constants

- Can be used for calculation in User Field Formulas and Script

The image displays three screenshots from Bentley software illustrating the use of user-defined project constants.

Top Left: Project Constants Table

The 'Project' window shows a table of constants. The 'Constants' tab is selected, displaying the following data:

Name (unique)	Type	Value
WasteFactor	Number	0.02
FormworkPercent	Number	0.20

Bottom Left: Formula Editor

The 'Formula editor' window shows the 'Constants' category selected in the left pane. The 'FormworkPercent' constant is highlighted, and the formula 'FormworkPercent = DOUBLE(0.2)' is displayed at the bottom.

Right: Script Interpreter

The 'Script Interpreter' window shows a script being executed. The 'ProjectConstants' tab is selected, and the script contains the following command:

```
SET_PROPERTY( PHYSICALVOL_SH, "Cubic yard", SUM 3D.UFV("Volume")*(1-WasteFactor))
```

The 'Command list' table shows the execution progress of various commands:

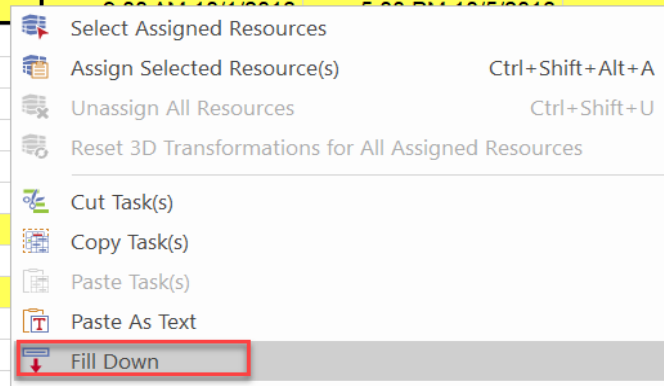
Index	Script	Command	Object	Argument	Status
0	[0]	SetProperty(PHYSICAL...	TASK\Area A FND - TO...	10011.75900204[d...	
1	[0][1]	SetProperty(PHYSICAL...	TASK\Area D FND - TO...	5574.60802266[d...	
2	[0][2]	SetProperty(PHYSICAL...	TASK\Area B FND - TO...	2242.07211432[do...	
3	[0][3]	SetProperty(PHYSICAL...	TASK\Area A FND - Ste...	3459.8048151[do...	
4	[0][4]	SetProperty(PHYSICAL...	TASK\Area D FND - Ste...	6601.2545436[do...	
5	[0][5]	SetProperty(PHYSICAL...	TASK\Area B FND - Ste...	90.86500068[doubl...	
6	[0][6]	SetProperty(PHYSICAL...	TASK\Area E FND - Ste...	146.71000272[do...	
7	[0][7]	SetProperty(PHYSICAL...	TASK[D1]	145.71000272[do...	
8	[0][8]	SetProperty(PHYSICAL...	TASK[D2]	357.2125017[doubl...	
9	[0][9]	SetProperty(PHYSICAL...	TASK[D3]	127.67000034[do...	
10	[0][10]	SetProperty(PHYSICAL...	TASK[D4]	166.81204338[do...	
11	[0][11]	SetProperty(PHYSICAL...	TASK[D5]	243.14250306[do...	
12	[0][12]	SetProperty(PHYSICAL...	TASK[D6]	311.05750374[do...	
13	[0][13]	SetProperty(PHYSICAL...	TASK[D7]	107.3125017[doubl...	
14	[0][14]	SetProperty(PHYSICAL...	TASK\Area C FND - Ste...	3334.81541556[do...	

The 'Progress' bar at the bottom indicates 'All scripts resolved.' and is fully green.

Fill Down command in tables

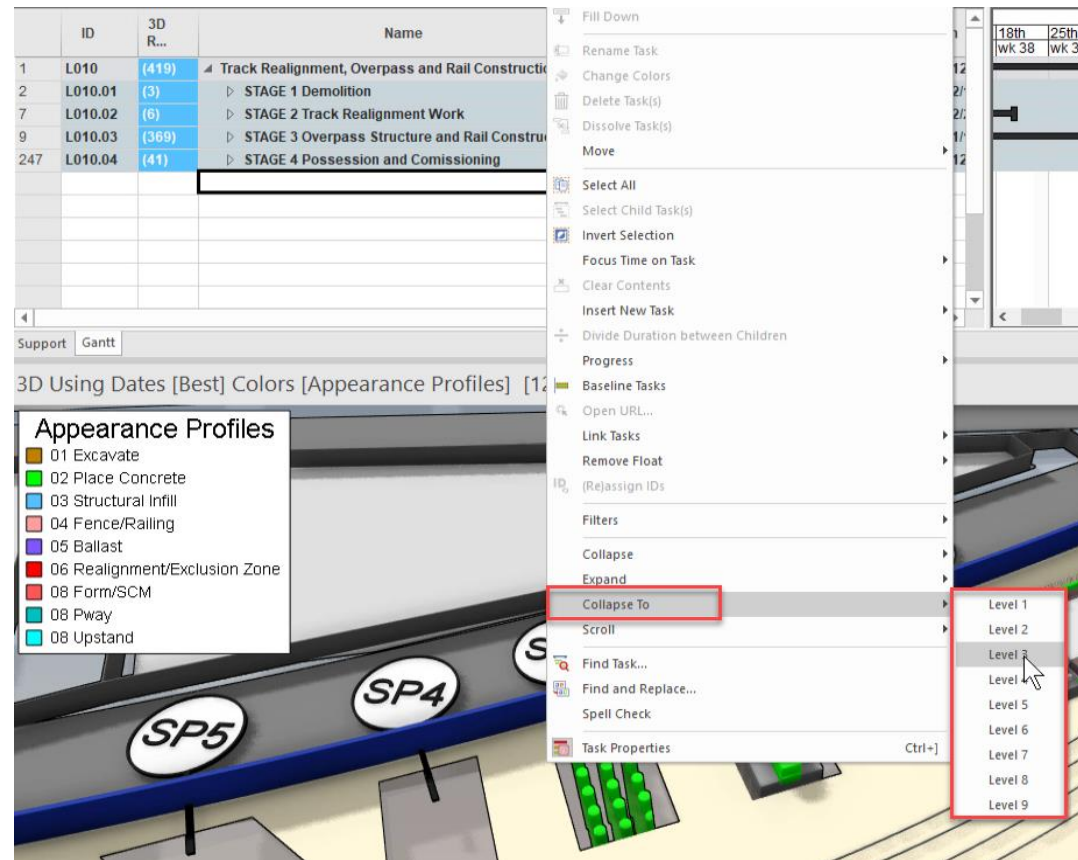
- Can be used to easily copy parameter values to non-consecutive rows

	ID	Name	Duration	Start	Finish	3D Resources
437	ST02826	Prime/ Paint	5d	9:00 AM 9/3/2018	5:00 PM 9/7/2018	
438	ST02836	Ceiling Grid	5d	9:00 AM 9/10/2018	5:00 PM 9/14/2018	10
439	ST02846	MEP Drops	10d	9:00 AM 9/17/2018	5:00 PM 9/28/2018	
440	ST02851	Above Ceiling Inspections	5d			
441	ST02856	Ceiling Tile	5d			
442	ST02866	Final Paint	10d			
443	ST02876	Doors Hardware	5d			
444	ST02886	MEP Trim-Out	10d			
445	ST02896	Wall Protection	5d			
446	ST02906	Flooring/ Base	5d			
447	ST02916	Testing, Punch	10d			
448	ST03976	Commissioning	80d			
449	ST03991	Certifications	30d			
450	ST04006	Final Inspections	35d			
451	ST01746	AIR-ON	5d			
452	0020	SITWORK	60d			
	442	ST02866	Final Paint	10d	9:00 AM 10/15/2018	5:00 PM 10/26/2018
	443	ST02876	Doors Hardware	5d	9:00 AM 10/29/2018	5:00 PM 11/2/2018
	444	ST02886	MEP Trim-Out	10d	9:00 AM 10/29/2018	5:00 PM 11/9/2018
	445	ST02896	Wall Protection	5d	9:00 AM 11/12/2018	5:00 PM 11/16/2018
	446	ST02906	Flooring/ Base	5d	9:00 AM 11/19/2018	5:00 PM 11/23/2018
	447	ST02916	Testing, Punch	5d	9:00 AM 11/26/2018	5:00 PM 11/30/2018
	448	ST03976	Commissioning	80d	9:00 AM 11/12/2018 (*)	5:00 PM 3/1/2019 (*)
	449	ST03991	Certifications	5d	9:00 AM 3/20/2019	5:00 PM 3/26/2019
	450	ST04006	Final Inspections	35d	9:00 AM 3/20/2019	5:00 PM 5/7/2019
						14



Collapse/Expand to a specific level in tables

- Quickly collapse to a certain level to show the Work Breakdown Structure or Code summaries and hide detailed tasks



Assign Resource Statuses with Script

- Assign in bulk based on Resource properties (e.g. User Field value).

The screenshot displays the 'Resources' window with a table of resource data. The 'SYN-Status' column is highlighted with a red box. Below the table, the 'Script Interpreter' window shows a script titled 'Assign Resource Statuses by UFVs' with the following code:

```
RESOURCE(SELECTED) SET_PROPERTY( STATUS_NAME, "Default category-Concrete:" + UFV("SYN-Status") )
```

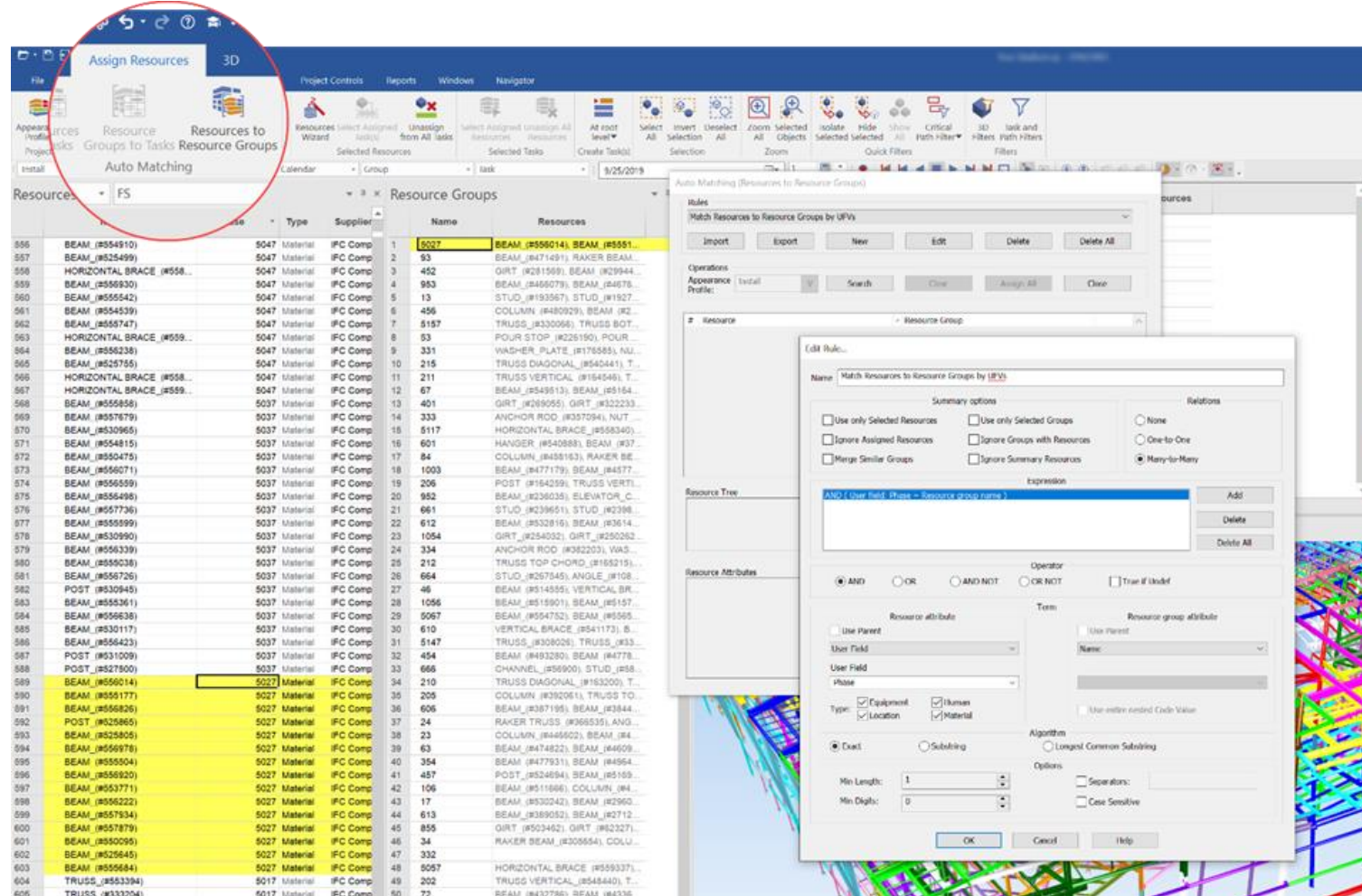
The 'Command list' window at the bottom shows a list of commands executed, all of which are 'SetProperty' commands for the 'STATUS_NAME' property, indicating that the script successfully assigned the status for each resource.

Name	3D	SYN-Status	Default category: Status Set	Default category: Status	Default category: Status Date
Part [622833]	1	Form	Concrete	Form	10:17 PM 12/15/
Part [622834]	1	Form	Concrete	Form	10:17 PM 12/15/
Part [622835]	1	Form	Concrete	Form	10:17 PM 12/15/
Part [622836]	1	Form	Concrete	Form	10:17 PM 12/15/
Part [622837]	1	Form	Concrete	Form	10:17 PM 12/15/
Part [622839]	1	Form	Concrete	Form	10:17 PM 12/15/
Part [622840]	1	Form	Concrete	Form	10:17 PM 12/15/
Part [623079]	1	Reinforce	Concrete	Reinforce	10:17 PM 12/15/
Part [623082]	1	Reinforce	Concrete	Reinforce	10:17 PM 12/15/
Part [623090]	1	Reinforce	Concrete	Reinforce	10:17 PM 12/15/
Part [623091]					
Part [623094]					
Part [623096]					
Part [623104]					
Part [623109]					
Part [623116]					
Part [623117]					

Index [Script...]	Command	Object	Argument	Status
0 [0][0]	SetProperty(STATUS_N...	RESOURCE[Part [6230...	Default category: C...	assigned
1 [0][1]	SetProperty(STATUS_N...	RESOURCE[Part [6230...	Default category: C...	assigned
2 [0][2]	SetProperty(STATUS_N...	RESOURCE[Part [6230...	Default category: C...	assigned
3 [0][3]	SetProperty(STATUS_N...	RESOURCE[Part [6231...	Default category: C...	assigned
4 [0][4]	SetProperty(STATUS_N...	RESOURCE[Part [6230...	Default category: C...	assigned
5 [0][5]	SetProperty(STATUS_N...	RESOURCE[Part [6228...	Default category: C...	assigned
6 [0][6]	SetProperty(STATUS_N...	RESOURCE[Part [6228...	Default category: C...	assigned
7 [0][7]	SetProperty(STATUS_N...	RESOURCE[Part [6230...	Default category: C...	assigned
8 [0][8]	SetProperty(STATUS_N...	RESOURCE[Part [6228...	Default category: C...	assigned
9 [0][9]	SetProperty(STATUS_N...	RESOURCE[Part [6228...	Default category: C...	assigned
10 [0][10]	SetProperty(STATUS_N...	RESOURCE[Part [6230...	Default category: C...	assigned

Auto-match Resources to Resource Groups

- Automatically assign Resources in bulk to Resource Groups based on Resource properties (e.g. User Field value).



Submit your ideas for improvements and new features

- Select Help>Submit an Idea from within Pro to navigate to the Bentley Communities page where you can submit your ideas

